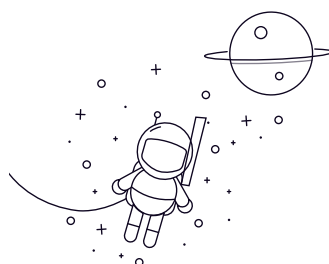


## 7900C Series



select	Inquiry	Bearing No.	Boundary dimensions [mm]			Basic load ratings(kN)		Limiting speed(rpm )	Mass
			d	D	B	Dynamic(Cr)	Static(Cor)	Grease Oil	Kg
7901C	12	24	6	3.3	1.8	28000	36000	0.011	
7902C	15	28	7	4.7	2.6	24000	32000	0.015	
7903C	17	30	7	5	2.8	22000	30000	0.017	
7904C	20	37	9	6.8	4.2	20000	28000	0.035	
7905C	25	42	9	7.8	5.4	18000	26000	0.042	
7906C	30	47	9	8.2	6.2	16000	24000	0.048	
7907C	35	55	10	12	9.1	14000	22000	0.075	
7908C	40	62	12	14.5	10.6	12000	20000	0.11	
7909C	45	68	12	16	12.6	10000	18000	0.13	
7910C	50	72	12	16.5	15	8000	16000	0.14	
7911C	55	80	13	19.1	17.8	7500	15000	0.183	
7912C	60	85	13	19.5	18.5	7000	14000	0.198	
7913C	65	90	13	20.3	20.5	6500	13000	0.212	
7914C	70	100	16	28.1	27.5	6300	12000	0.342	
7915C	75	105	16	28.6	29.2	6000	10000	0.36	
7916C	80	116	16	29	30.5	5500	10000	0.381	
7917C	85	120	18	39	40.5	5000	9000	0.542	
7918C	90	125	18	41.2	46	5000	8500	0.56	
7919C	95	130	18	42.5	48	4500	8500	0.604	
7920C	100	140	20	48.5	52	4300	8200	0.808	

## 7900C Series

7921C	105	145	20	51	57	4000	8000	0.83
7922C	110	150	20	52	58	3800	7500	0.88
7924C	120	165	22	72	80.1	3600	7200	1.15
7926C	130	180	24	77.5	90.1	3400	7000	1.54
7928C	140	190	24	79.5	95.5	3200	6800	1.64
7930C	150	210	28	102	122	3000	6500	2.97
7932C	160	220	28	145.6	167.4	2800	6300	3.12