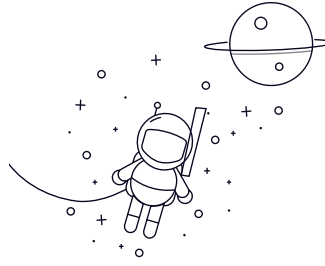


UCP Series



| select | Inquiry | Type | Dimensions [mm] | | | | | | | | | | | Bolt Dimensions | Tipo de rolamento | House Type | With Shield | With Shield | t | Zs | Wc | Zc | Weight (With House) (Kg) | Weight (With Shield) (Kg) | | | | | | | | | | | | |
|--------|---------|-------|-----------------|-----|-----|----|----|----|-----|-----|------|------|-----|-----------------|-------------------|--------------|--------------|-------------|------|-----|-----|-----|--------------------------|---------------------------|---|--|--|--|--|-----|---|--|--|--|--|--|
| | | | d | H | L | J | A | N | N1 | H1 | W | L1 | B | | | | | | | | | | | | S | | | | | | | | | | | |
| UCP203 | 17 | 30.2 | 127 | 96 | 38 | 12 | 16 | 14 | 62 | 42 | 27.4 | 11.5 | M10 | UC203 | P203 | | | | | | | | | | | | | | | 0.6 | - | | | | | |
| UCP204 | 20 | 33.3 | 127 | 96 | 38 | 12 | 16 | 14 | 65 | 42 | 31 | 12.7 | M10 | UC204 | P204 | S(SM)-UCP204 | C(CM)-UCP204 | 2 | 44.5 | 70 | 62 | 0.7 | 0.7 | | | | | | | | | | | | | |
| UCP205 | 25 | 36.5 | 140 | 105 | 38 | 12 | 19 | 16 | 71 | 42 | 34.1 | 14.3 | M10 | UC205 | P205 | S(SM)-UCP205 | C(CM)-UCP205 | 2 | 48 | 76 | 70 | 0.8 | 0.9 | | | | | | | | | | | | | |
| UCP206 | 30 | 42.9 | 165 | 121 | 48 | 14 | 21 | 18 | 84 | 54 | 38.1 | 15.9 | M12 | UC206 | P206 | S(SM)-UCP206 | C(CM)-UCP206 | 2 | 53 | 88 | 75 | 1.3 | 1.4 | | | | | | | | | | | | | |
| UCP207 | 35 | 47.6 | 167 | 126 | 48 | 14 | 21 | 19 | 93 | 54 | 42.9 | 17.5 | M12 | UC207 | P207 | S(SM)-UCP207 | C(CM)-UCP207 | 3 | 59.5 | 99 | 80 | 1.6 | 1.7 | | | | | | | | | | | | | |
| UCP208 | 40 | 49.2 | 184 | 136 | 54 | 14 | 21 | 19 | 98 | 54 | 49.2 | 19 | M12 | UC208 | P208 | S(SM)-UCP208 | C(CM)-UCP208 | 3 | 69 | 105 | 90 | 1.9 | 2.2 | | | | | | | | | | | | | |
| UCP209 | 45 | 54 | 190 | 146 | 54 | 14 | 21 | 20 | 106 | 60 | 49.2 | 19 | M12 | UC209 | P209 | S(SM)-UCP209 | C(CM)-UCP209 | 3 | 69 | 113 | 95 | 2.2 | 2.4 | | | | | | | | | | | | | |
| UCP210 | 50 | 57.2 | 206 | 159 | 60 | 18 | 23 | 22 | 114 | 65 | 51.6 | 19 | M16 | UC210 | P210 | S(SM)-UCP210 | C(CM)-UCP210 | 3 | 74.5 | 119 | 100 | 2.6 | 2.8 | | | | | | | | | | | | | |
| UCP211 | 55 | 63.5 | 219 | 172 | 60 | 18 | 23 | 22 | 125 | 65 | 55.6 | 22.2 | M16 | UC211 | P211 | S(SM)-UCP211 | C(CM)-UCP211 | 4 | 76 | 130 | 100 | 3.3 | 3.6 | | | | | | | | | | | | | |
| UCP212 | 60 | 69.9 | 241 | 186 | 70 | 18 | 23 | 25 | 138 | 70 | 65.1 | 25.4 | M16 | UC212 | P212 | S(SM)-UCP212 | C(CM)-UCP212 | 4 | 89 | 143 | 115 | 4.6 | 5 | | | | | | | | | | | | | |
| UCP213 | 65 | 76.2 | 265 | 203 | 70 | 23 | 28 | 27 | 150 | 77 | 65.1 | 25.4 | M20 | UC213 | P213 | S(SM)-UCP213 | C(CM)-UCP213 | 4 | 89 | 155 | 120 | 5.9 | 6.3 | | | | | | | | | | | | | |
| UCP214 | 70 | 79.4 | 266 | 210 | 72 | 23 | 28 | 27 | 157 | 77 | 74.6 | 30.2 | M20 | UC214 | P214 | - | C(CM)-UCP214 | 4 | 162 | 135 | 6.6 | 9.3 | - | | | | | | | | | | | | | |
| UCP215 | 75 | 82.6 | 274 | 217 | 74 | 23 | 28 | 28 | 162 | 80 | 77.8 | 33.3 | M20 | UC215 | P215 | - | C(CM)-UCP215 | 4 | 168 | 135 | 7.4 | 11 | - | | | | | | | | | | | | | |
| UCP216 | 80 | 88.9 | 292 | 232 | 78 | 23 | 28 | 30 | 174 | 85 | 82.6 | 33.3 | M20 | UC216 | P216 | - | C(CM)-UCP216 | 4 | 181 | 145 | 9 | 13 | - | | | | | | | | | | | | | |
| UCP217 | 85 | 95.2 | 310 | 247 | 83 | 23 | 28 | 32 | 187 | 85 | 85.7 | 34.1 | M20 | UC217 | P217 | - | C(CM)-UCP217 | 5 | 191 | 155 | 11 | 15 | - | | | | | | | | | | | | | |
| UCP218 | 90 | 101.6 | 327 | 262 | 88 | 27 | 34 | 33 | 200 | 90 | 96 | 39.7 | M24 | UC218 | P218 | - | C(CM)-UCP218 | 5 | 204 | 165 | 13 | 18 | - | | | | | | | | | | | | | |
| UCP305 | 25 | 45 | 175 | 132 | 45 | 17 | 20 | 15 | 85 | 54 | 38 | 15 | M14 | UC305 | P305 | - | C(CM)-UCP305 | 2 | 91 | 80 | 1.4 | 2 | 2 | | | | | | | | | | | | | |
| UCP306 | 30 | 50 | 180 | 140 | 50 | 17 | 20 | 18 | 95 | 54 | 43 | 17 | M14 | UC306 | P306 | - | C(CM)-UCP306 | 2 | 105 | 85 | 1.8 | 2.7 | - | | | | | | | | | | | | | |
| UCP307 | 35 | 55 | 210 | 160 | 56 | 17 | 25 | 20 | 106 | 60 | 48 | 19 | M14 | UC307 | P307 | - | C(CM)-UCP307 | 3 | 115 | 95 | 2.8 | 3.5 | - | | | | | | | | | | | | | |
| UCP308 | 40 | 60 | 220 | 170 | 60 | 17 | 27 | 22 | 116 | 60 | 52 | 19 | M14 | UC308 | P308 | - | C(CM)-UCP308 | 3 | 125 | 105 | 3 | 4.5 | - | | | | | | | | | | | | | |
| UCP309 | 45 | 67 | 245 | 190 | 67 | 20 | 30 | 24 | 129 | 65 | 57 | 22 | M16 | UC309 | P309 | - | C(CM)-UCP309 | 3 | 140 | 110 | 4.1 | 6.1 | - | | | | | | | | | | | | | |
| UCP310 | 50 | 75 | 275 | 212 | 75 | 20 | 35 | 27 | 143 | 75 | 61 | 22 | M16 | UC310 | P310 | - | C(CM)-UCP310 | 3 | 156 | 120 | 5.8 | 8.4 | - | | | | | | | | | | | | | |
| UCP311 | 55 | 80 | 310 | 236 | 80 | 20 | 38 | 30 | 154 | 85 | 66 | 25 | M16 | UC311 | P311 | - | C(CM)-UCP311 | 4 | 166 | 125 | 7.4 | 9.7 | - | | | | | | | | | | | | | |
| UCP312 | 60 | 85 | 330 | 250 | 85 | 25 | 38 | 32 | 165 | 95 | 71 | 26 | M20 | UC312 | P312 | - | C(CM)-UCP312 | 4 | 179 | 135 | 9.4 | 12 | - | | | | | | | | | | | | | |
| UCP313 | 65 | 90 | 340 | 260 | 90 | 25 | 38 | 33 | 176 | 105 | 75 | 30 | M20 | UC313 | P313 | - | C(CM)-UCP313 | 4 | 190 | 140 | 10 | 15 | - | | | | | | | | | | | | | |
| UCP314 | 70 | 95 | 360 | 280 | 90 | 27 | 40 | 35 | 187 | 105 | 78 | 33 | M22 | UC314 | P314 | - | C(CM)-UCP314 | 4 | 200 | 140 | 12 | 16 | - | | | | | | | | | | | | | |
| UCP315 | 75 | 100 | 380 | 290 | 100 | 27 | 40 | 35 | 198 | 110 | 82 | 32 | M22 | UC315 | P315 | - | C(CM)-UCP315 | 4 | 210 | 150 | 14 | 20 | - | | | | | | | | | | | | | |
| UCP316 | 80 | 106 | 400 | 300 | 110 | 27 | 40 | 40 | 210 | 110 | 86 | 34 | M22 | UC316 | P316 | - | C(CM)-UCP316 | 4 | 221 | 155 | 18 | 23 | - | | | | | | | | | | | | | |
| UCP317 | 85 | 112 | 420 | 320 | 110 | 33 | 45 | 40 | 220 | 120 | 96 | 40 | M27 | UC317 | P317 | - | C(CM)-UCP317 | 5 | 235 | 170 | 20 | 27 | - | | | | | | | | | | | | | |
| UCP318 | 90 | 118 | 430 | 330 | 110 | 33 | 45 | 45 | 235 | 120 | 96 | 40 | M27 | UC318 | P318 | - | C(CM)-UCP318 | 5 | 246 | 170 | 24 | 30 | - | | | | | | | | | | | | | |