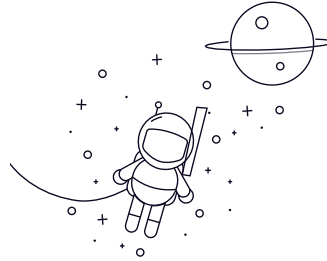


## UCX Series



select	Inquiry	Bearing No.	d		Dimensions [mm]					G ds
			(mm)	(in.)	D	Bi	Be	n	m	
UCX05-14	22.225	0.875	62	38.1	19	15.9	22.2	6	1/4-28UNF	
UCX05	25		62	38.1	19	15.9	22.2	6	M6x1.0	
UCX05-16	25.4	1	62	38.1	19	15.9	22.2	6	1/4-28UNF	
UCX06	30		72	42.9	20	17.5	25.4	6.5	M8x1.0	
UCX06-19	30.163	1.1875	72	42.9	20	17.5	25.4	6.5	5/16-24UNF	
UCX06-20	31.75	1.25	72	42.9	20	17.5	25.4	6.5	5/16-24UNF	
UCX07-20	31.75	1.25	80	49.2	21	19	30.2	8	5/16-24UNF	
UCX07-22	34.925	1.375	80	49.2	21	19	30.2	8	5/16-24UNF	
UCX07	35		80	49.2	21	19	30.2	8	M8x1.0	
UCX07-23	36.513	1.4375	80	49.2	21	19	30.2	8	5/16-24UNF	
UCX08-24	38.1	1.5	85	49.2	22	19	30.2	8	5/16-24UNF	
UCX08	40		85	49.2	22	19	30.2	8	M8x1.0	
UCX09-27	42.863	1.6875	90	51.6	24	19	32.6	10	3/8-24UNF	
UCX09-28	44.45	1.75	90	51.6	24	19	32.6	10	3/8-24UNF	
UCX09	45		90	51.6	24	19	32.6	10	M10x1.25	
UCX10-31	49.213	1.9375	100	55.6	25	22.2	33.4	10	3/8-24UNF	
UCX10	50		100	55.6	25	22.2	33.4	10	M10x1.25	
UCX10-32	50.8	2	100	55.6	25	22.2	33.4	10	3/8-24UNF	
UCX11-32	50.8	2	110	65.1	27	25.4	39.7	10	3/8-24UNF	
UCX11	55		110	65.1	27	25.4	39.7	10	M10x1.25	

UCX Series

UCX11-35	55.563	2.1875	110	65.1	27	25.4	39.7	10	3/8-24UNF
UCX11-36			110	65.1	27	25.4	39.7	10	3/8-24UNF
UCX12-36	57.15	2 1/4	120	65.1	28	25.4	39.7	10	3/8-24UNF
UCX12	60		120	65.1	28	25.4	39.7	10	M10x1.25
UCX12-38	60.325	2 3/8	120	65.1	28	25.4	39.7	10	3/8-24UNF
UCX12-39	61.913	2 7/16	120	65.1	28	25.4	39.7	10	3/8-24UNF
UCX13-40	63.5	2 1/2	125	74.6	30	30.2	44.4	12	7/16-20UNF
UCX13	65		125	74.6	30	30.2	44.4	12	M12x1.5
UCX14-44	69.85	2.75	130	77.8	30	33.3	44.5	12	7/16-20UNF
UCX14	70		130	77.8	30	33.3	44.5	12	M12x1.5